

sinopé

Web programmable

RM3250RF WEB PROGRAMMABLE ELECTRICAL LOAD CONTROLLER [50 A]



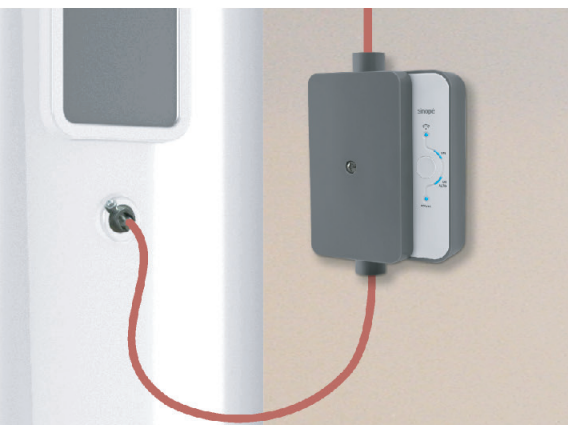
REMOTELY MANAGE THE USE OF
ENERGY

The RM3250RF electrical load controller allows to remotely control and program the use of energy-intensive appliances such as electric water heater, pool pump, window AC unit and outdoor lighting. It will also protect your cottage from flooding by facilitating the deactivation of the well pump during a prolonged absence.

Managing the use of energy has never been simpler.



RM3250RF



Electric water heater | Pumps | Window AC unit | Outdoor lighting | And much more!

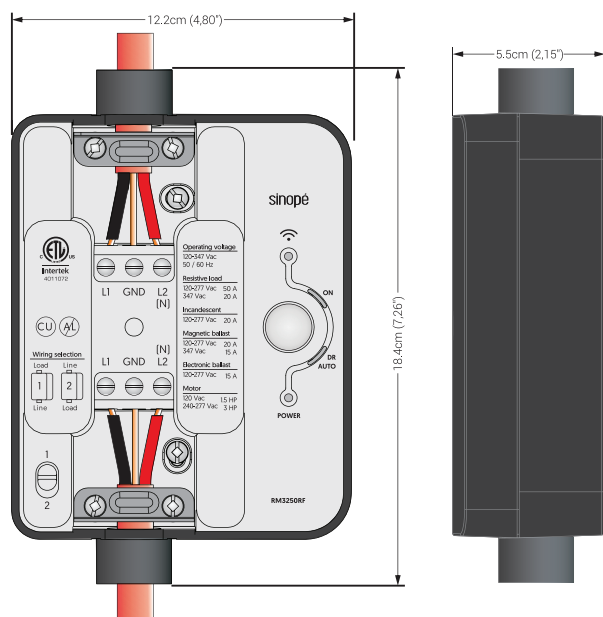
RM3250RF

WEB PROGRAMMABLE ELECTRICAL LOAD CONTROLLER [50 A]



- Remote control through the neviweb® platform
- 7-day programming, up to 6 periods per day
- Modes: automatic, manual, timer, away
- Detection of the connected load
- Energy consumption reports generated on-demand
- Scenes generator allows interaction between compatible devices
- Possibility to include in a demand-response management program
- 3-year warranty

ADDED VALUE



- Once installed, the RM3250RF electrical load controller allows to activate or deactivate locally and remotely the device it controls.

Remote access requires a permanent Internet connection and a GT125 Web interface.



OPERATION

Maximum load:

	120 V	240 V	277 V	347 V
Resistive load	50 A	50 A	50 A	20 A
Incandescent lamp	20 A	20 A	20 A	
Magnetic ballast	20 A	20 A	20 A	15 A
Electronic ballast	15 A	15 A	15 A	
Motor	1.5 HP	3 HP	3 HP	

Operating voltage: 120 - 347 Vac, 50 / 60 Hz

Double-pole latching relay

Consumption:

Load activated: 0.5 W @ 120 - 240 Vac

Load standby: 0.47 W @ 120 - 240 Vac

Operating temperature: -20 °C to 40 °C [-4 °F to 104 °F]

Storage: -20 °C to 50 °C [-4 °F to 122 °F]

Indoor installation only.

Conforms to ANSI/UL Std. 916

Certified under CAN/CSA Std.

C22.2 No205

SPECIFICATIONS

sinopé

T: 450.741.7700 TF: 1.855.741.7701

sinopetech.com

ventes.sales@sinopetech.com

Saint-Jean-sur-Richelieu, Qc, Canada

Neviweb® is a registered trademark of Sinopé Technologies Inc. in Canada and the United States.



270-2505-0004-B