

# User's guide

TH1120-3000 (3000 W)

TH1120-4000 (4000 W)

Non-programmable thermostat

sinopé

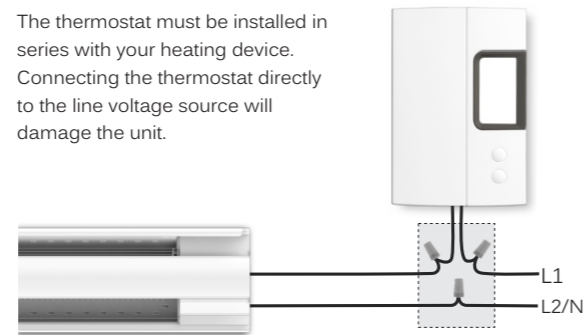
## Warnings

The installation of this thermostat should be made by a certified electrician and must be installed in conformity with the national and local Electrical Codes.

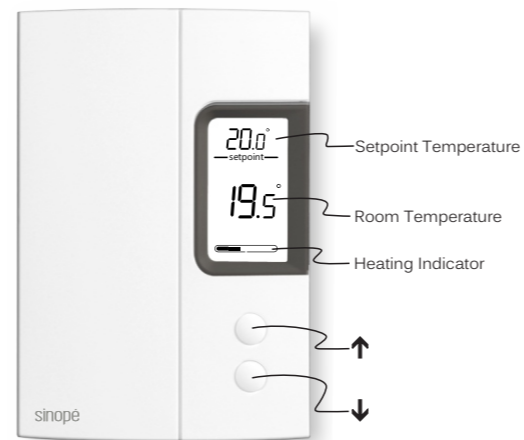


Since you are a valuable customer, before starting the installation of your new thermostat, please make sure that the breakers for your heating system are off at the main electrical panel!

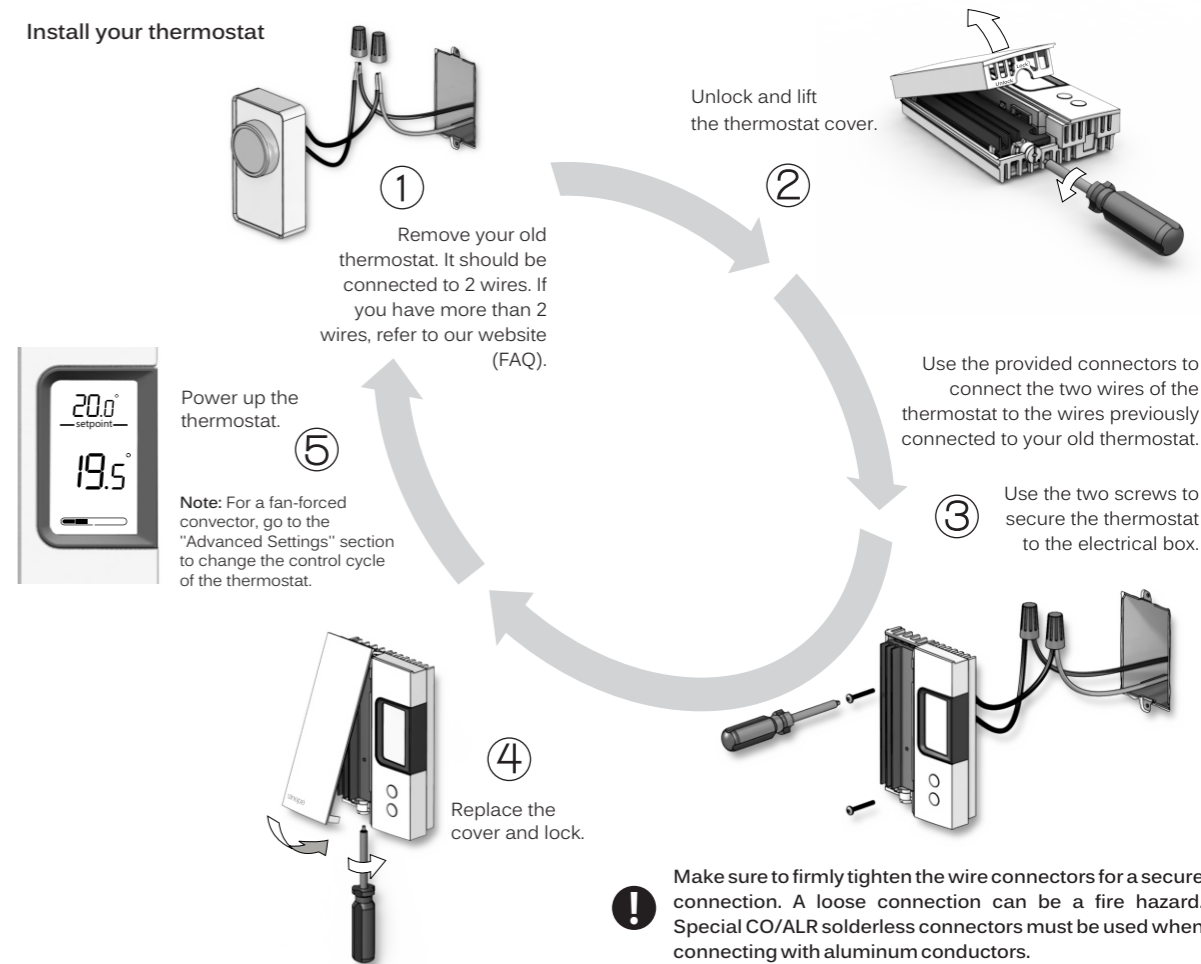
The thermostat must be installed in series with your heating device. Connecting the thermostat directly to the line voltage source will damage the unit.



**Note:** The wires of this thermostat are non-polarized.




## Install your thermostat



Advanced Settings


To change the thermostat's setting you need to:




Get the setpoint to its minimum and hold the  button for 3 seconds to access the menu.



Press the  button to change the setting.

Press the  button to select the next parameter.

Press and hold the  button for 3 seconds to exit the menu and return to normal display.

Order	Parameters & settings	Default Display
1	Temperature format °C or °F	 Temp
2	Control Cycle SHT (short cycle for electric baseboard) FAN (long cycle for fan-forced heat)	 Cycle
3	Backlight OFF (active for 6 sec if a button is pressed) ON (always active) (Default: OFF)	Light 

Technical specifications

Operating voltage: 120/208/240 VAC, 60 Hz

Setpoint range: 5 °C to 30 °C (41 °F to 86 °F)

Display range: 0 °C to 70 °C (32 °F to 99 °F)

Resolution: ± 0.5 °C (± 1 °F)

Storage: -20 °C to 50 °C (-4 °F to 122 °F)

TH1120-3000 thermostat

Maximum load: 12.5 A / 3000 W @ 240 VAC  
Resistive load only

Minimum load: 0.5 A / 120 W @ 240 VAC

TH1120-4000 thermostat

Maximum load: 16.7 A / 4000 W @ 240 VAC  
Resistive load only

Minimum load: 0.5 A / 120 W @ 240 VAC

Compatible with an electric heating system such as:

- Baseboard heater
- Convactor (short cycle)
- Fan-forced convector (long cycle)

3-year limited warranty

SINOPÉ TECHNOLOGIES INC. warrants the components of their products against defects in material and workmanship for a 3 year period from the date of purchase, under normal use and service, when proof of purchase of such is provided to the manufacturer. This warranty does not cover any transportation costs that may be incurred by the consumer.

Nor does it cover a product subjected to misuse or accidental damage.

The obligation of Sinopé Technologies Inc., under the terms of this warranty, will be to supply a new unit and this releases the manufacturer from paying the installation costs or other secondary charges linked to replacing the unit or the components.

sinopé

For more information, visit our website at:

[www.sinopetech.com](http://www.sinopetech.com)