

User's guide

TH1120P-3000

Programmable thermostat
(3000 W)

sinopé

Warnings

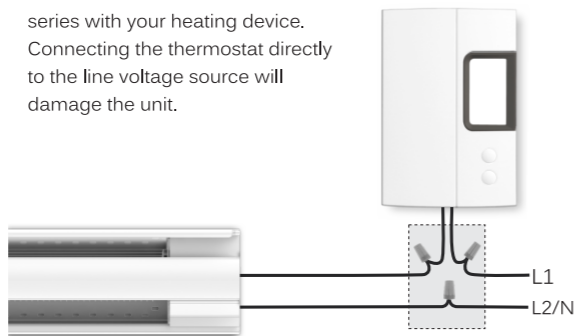
The installation of this thermostat should be made by a certified electrician and must be installed in conformity with the national and local Electrical Codes.



Since you are a valuable customer, before starting the installation of your new thermostat, please make sure that the breakers for your heating system are off at the main electrical panel!

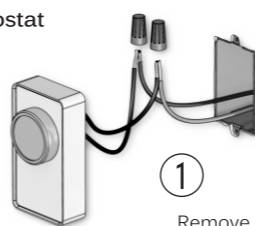
Max. resistive load for this thermostat:
12.5 A / 3000 W @ 240 VAC

The thermostat must be installed in series with your heating device. Connecting the thermostat directly to the line voltage source will damage the unit.



Note: The wires of this thermostat are non-polarized.

Install your thermostat

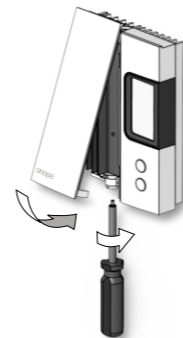


1 Remove your old thermostat. It should be connected to 2 wires. If you have more than 2 wires, refer to our website (FAQ).

Power up the thermostat.

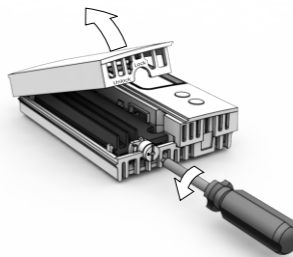


Note: For a fan-forced convector, go to the "Advanced Settings" section to change the control cycle of the thermostat.



4 Replace the cover and lock.

Unlock and lift the thermostat cover.

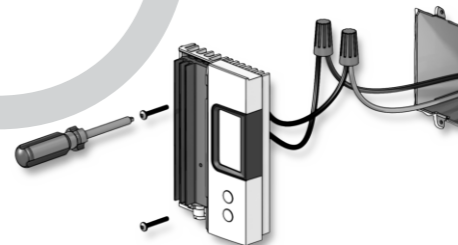


2

Use the provided connectors to connect the two wires of the thermostat to the wires previously connected to your old thermostat.

3

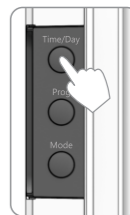
Use the two screws to secure the thermostat to the electrical box.



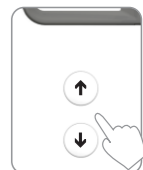
Make sure to firmly tighten the wire connectors for a secure connection. A loose connection can be a fire hazard. Special CO/ALR solderless connectors must be used when connecting with aluminum conductors.

Set Date & Time

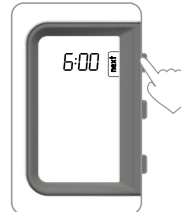
Press the "Time" button to enter the setting mode.



Press the ↑ or ↓ button to change the values of the flashing parameter.



Press the "next" button to select the next parameters to be changed.



Change the operating modes

Press the "Mode" button to select the operating mode (ECONO, AUTO or MAN).



ECONO: Used to turn off the heating during the summer or during an extended absence. The Econo setpoint can be modified according to the needs of the user (default 5° C).

AUTO: The thermostat automatically changes the temperature setpoint according to the schedule you have programmed. Changing the setpoint while in AUTO mode will temporarily bypass the program. It will automatically return to the schedule at next programmed period.

MAN: Changes to the temperature setpoint must be done manually.

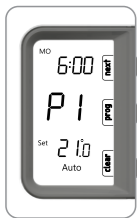
Program your thermostat



Hold the "prog" button for 3 seconds to enter the programming mode. Period #1 (P1) for Monday (MO) will appear.



Use the "prog" button to scroll the periods (P1 to P4) of the day.

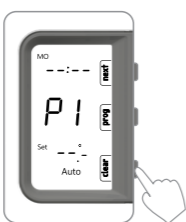


Use the "next" button to select the parameter you wish to change. The active parameter will be flashing, meaning it can be changed by using the ↑ or ↓ buttons.

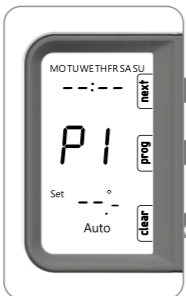


Use the ↑ or ↓ buttons to change the selected parameter.

Program your thermostat



Use the "clear" button to erase the selected period.

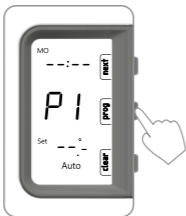


Tips:

While in programming mode, you can hold the "clear" button for 3 seconds to clear all the schedule.

Then, you can enter the programs for P1 to P4 for all 7 days at the same time.

Exit the programming mode and reenter if you wish to edit the new schedule day by day. (Ex.: Erase P2 and P3 for Saturday and Sunday).



Hold the "prog" button for 3 seconds to exit the programming mode.

Program your thermostat / Advanced Settings

The thermostat is preprogrammed with the following schedule:

	Week days Mo - Fr			Weekend Sa - Su		
P1	6h00	21°		P1	6h00	21°
P2	8h00	17°		P2	---	---
P3	18h00	21°		P3	---	---
P4	22h00	17°		P4	22h00	17°

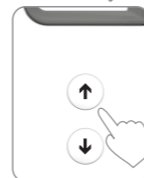
Advanced Settings

To change the thermostat's settings you need to:

Press and hold the "Mode" button for 3 seconds to access the menu.

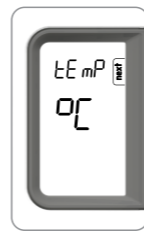


Use the ↑ and ↓ buttons to change the setting.



Press the "next" button to select the parameter.

Press the "Mode" button to exit the menu and return to normal display.



Advanced Settings

Order	Parameters & settings	Default Display
1	Temperature format °C or °F	EE mP OC
2	Time format 24h or 12h (default : 24h)	TimeE 24H
3	Backlight OFF (active for 6 sec if a button is pressed) ON (always active) (Default: OFF)	bL OFF
4	Automatic Daylight Saving Time* OFF / ON (default : ON)	dSt ON
5	Early Start** OFF / ON (default : OFF)	ES OFF
6	Control Cycle SHR (short cycle for electric baseboard) FAN (long cycle for fan-forced heat)	EE rL SHr

* When Automatic Daylight Saving Time is enabled (ON), the thermostat automatically detect the DST periods and adjust the time accordingly.

** When the Early Start functionality is enabled, the thermostat determines when to start heating in order to obtain the desired temperature by the time set in your schedule.

Technical Specifications

Operating voltage: 120/208/240 VAC, 60 Hz

Maximum load:

12.5 A / 3000 W @ 240 VAC - Resistive load only

Minimum load:

0.5 A / 120 W @ 240 VAC

Program: 7-day, 4 periods per day

Setpoint range: 5 °C to 30 °C (41 °F to 86 °F)

Display range: 0 °C to 70 °C (32 °F to 99 °F)

Resolution: ± 0.5 °C (± 1 °F)

Storage: -20 °C to 50 °C (-4 °F to 122 °F)

Compatible with an electric heating system such as:

- Baseboard heater
- Convector (short cycle)
- Fan-forced convector (long cycle)

3-year limited warranty

SINOPÉ TECHNOLOGIES INC. warrants the components of their products against defects in material and workmanship for a 3 year period from the date of purchase, under normal use and service, when proof of purchase of such is provided to the manufacturer. This warranty does not cover any transportation costs that may be incurred by the consumer. Nor does it cover a product subjected to misuse or accidental damage. The obligation of Sinopé Technologies Inc., under the terms of this warranty, will be to supply a new unit and this releases the manufacturer from paying the installation costs or other secondary charges linked to replacing the unit or the components.

sinopé

For more information, visit our website at:
www.sinopetech.com