

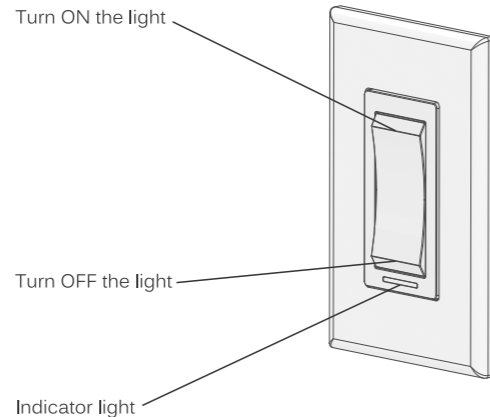
Installation guide

SW2500RF

Web programmable light switch

sinopé

Your SW2500RF light switch



Light turned ON = Blue
Light turned OFF = Amber

The indicator intensity can be changed from your neviweb® account.

Warnings

The installation of this light switch should be made by a certified electrician and must be installed in conformity with the national and local Electrical Codes.

This light switch requires a neutral wire. If your electrical box does not have a neutral wire, you can either add one or install the light switch at a different location.

Technical Specifications

Operating voltage: 120 Vac, 60 Hz

Maximum load:

450 W: LED, CFL, Halogen
960 W: Incandescent
1800 W: Resistive
1/2 HP: Ceiling fan

Operation temperature: 0 °C to 40 °C (32 °F to 104 °F)

Storage: -20 °C to 50 °C (-4 °F to 122 °F)

Degree of protection provided: IP10

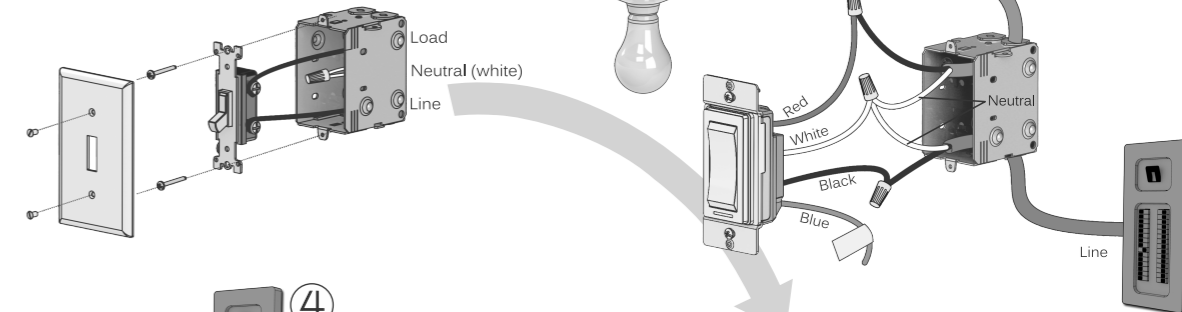
Type of action: 1

Conforms to ANSI/UL Std. 916

Certified to CAN/CSA Std. C22.2 No205

Install your light switch

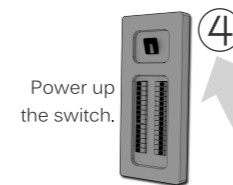
① Make sure that the breaker for your switch is OFF at the main electrical panel then remove the old switch.



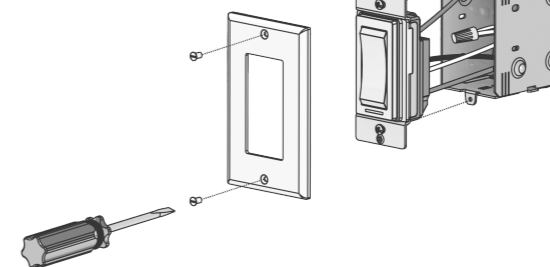
② Use the provided connectors to connect the wires as follows:

Red	→	Load
Black	→	Line
White	→	Neutral
Blue	→	None*

*Note: For a single pole installation, do not remove the label on the blue wire.
For a 3-way installation, consult the 3-way wiring diagram on the next page.

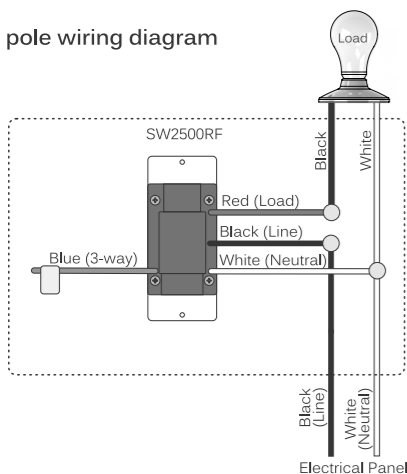


③ Use the provided screws to secure the light switch to the electrical box. Then, replace the wall plate.

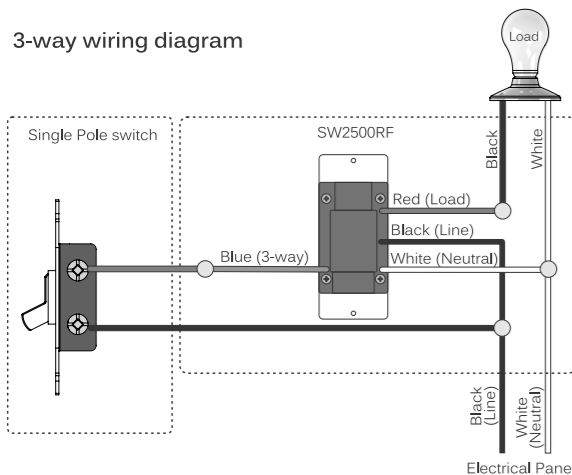


Make sure to firmly tighten the wire connectors for a secure connection. A loose connection can be a fire hazard. Special CO/ALR solderless connectors must be used when connecting with aluminum conductors.

Single pole wiring diagram



3-way wiring diagram



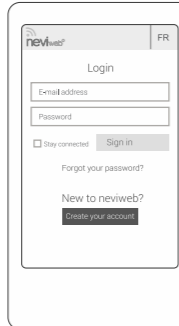
Link your light switch to your Web Interface

1

Initiate the connectivity session by pressing the button on the GT125. *Do not hold the button down.

Wait until the light flashes green, indicating that new devices can be added to your network.

Connect your network to neviweb®



If you already have a neviweb® account, your switches will automatically be integrated to your account. If you do not have an account yet, visit neviweb.com to open an account and add your network. To do so, refer to your GT125 installation guide.



Discover all the possibilities of your switches by visiting www.neviweb.com.

2

Connect to your network the switch that is closest to the GT125 by pressing simultaneously the two switch buttons for 1 second.

On the switch: The indicator flashes blue when the device is connecting.

The indicator turns red = Failed

Refer to the "support" section of our Website to troubleshoot the unit.

The indicator turns green = Connected

After a few seconds, the indicator changes color depending on the switch status. (Turned ON = blue, Turned OFF = amber)

3

Connect all your switches the same way, by going to the next closest switch.



4

When all switches are connected, press again on the button of the GT125 to close the connectivity session.

5

Manage your devices anytime!

Did you know that you have the possibility to connect up to 250 neviweb® compatible devices to one GT125 Web interface?

So don't wait anymore! Replace today your old devices by high tech reliable and affordable models.

For a complete list of our products, visit www.sinopetech.com.



And many more!

To be informed about our upcoming products:



or subscribe to our newsletter.

Transmitter Module IC: 7693A-89XAM9A / FCC ID: OA3MRF89XAM9A

This device complies with Industry Canada license exempt RSS standard(s). Operation is subject to the following two conditions: (1) this device does not cause interference, and (2) this device must accept any interference, including interference that may cause undesired operation of the device.

This equipment has been tested and found to comply with the limits for a Class B digital device, pursuant to part 15 of the FCC Rules. These limits are designed to provide reasonable protection against harmful interference in a residential installation. This equipment generates, uses and can radiate radio frequency energy, and if not installed and used in accordance with the instructions, may cause harmful interference to radio communications. However, there is no guarantee that interference will not occur in a particular installation. If this equipment does cause harmful interference to radio or television reception, which can be determined by turning the equipment OFF and ON, the user is encouraged to try to correct the interference by one or more of the following measures:

Reorient or relocate the receiving antenna. Increase the separation between the equipment and receiver. Connect the equipment into an outlet on a circuit different from that to which the receiver is connected. Consult the dealer or an experienced radio/TV technician for help.

3-year limited warranty

SINOPÉ TECHNOLOGIES INC. warrants the components of their products against defects in material and workmanship for a 3 year period from the date of purchase, under normal use and service, when proof of purchase of such is provided to the manufacturer. This warranty does not cover any transportation costs that may be incurred by the consumer. Nor does it cover a product subjected to misuse or accidental damage. The obligation of Sinopé Technologies Inc., under the terms of this warranty, will be to supply a new unit and this releases the manufacturer from paying the installation costs or other secondary charges linked to replacing the unit or the components.



For more information, visit our website at:

www.sinopetech.com