

Installation Guide

TH1300

Floor heating thermostat
Non-programmable
(3600 W)

sinopé

Warnings

The installation of this thermostat must be performed by a certified electrician and comply with the national and local electrical codes and regulations.



Before starting the installation of your new thermostat, please make sure that the breakers for your heating system are off at the main electrical panel!

Technical specifications

Operating voltage: 120/208/240 Vac, 50/60 Hz

TH1300 Thermostat

Maximum load:

1800 W @ 120 V / 15 A

3120 W @ 208 V / 15 A

3600 W @ 240 V / 15 A

Setpoint range: 5 °C to 30 °C (41 °F to 86 °F)

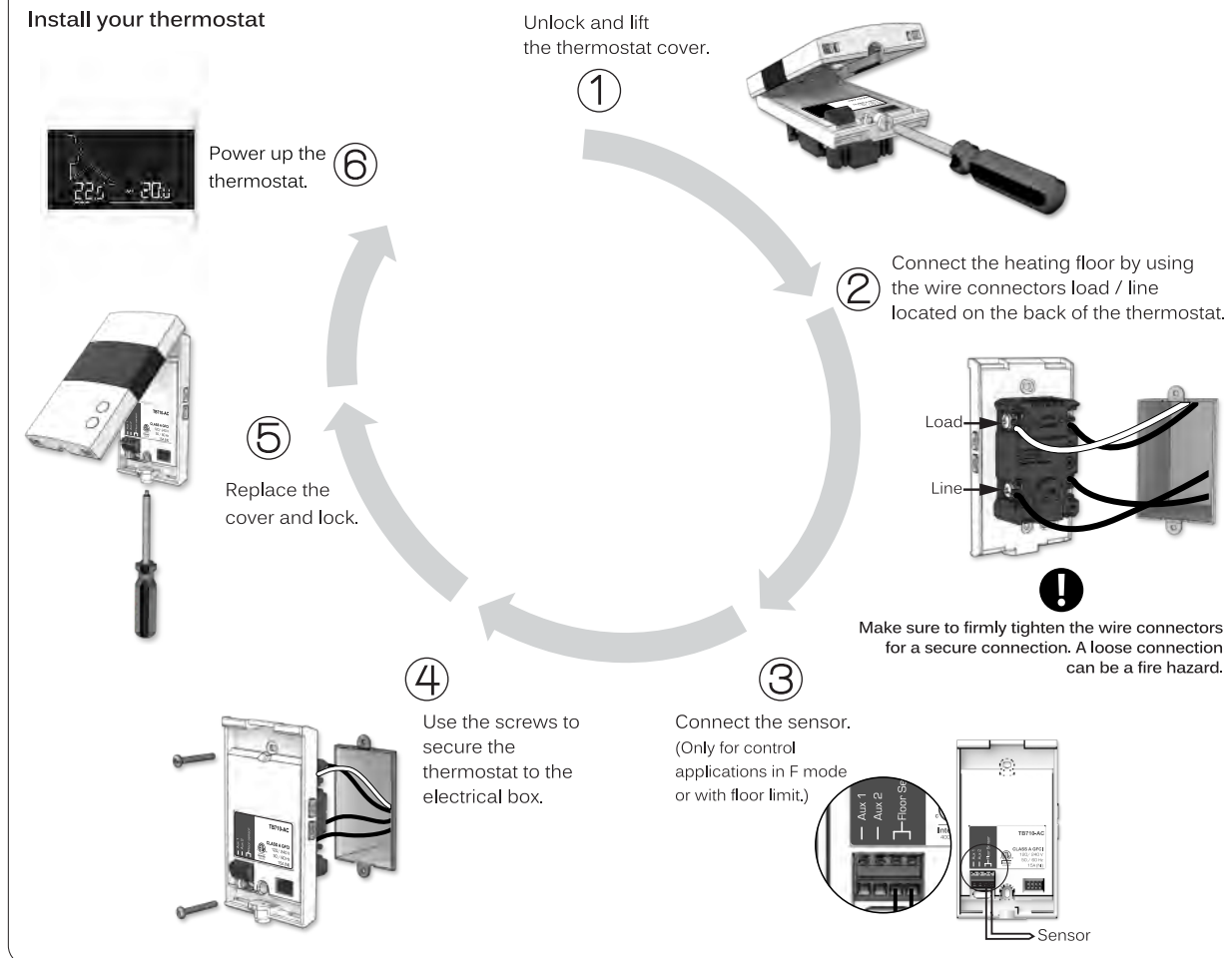
Display range: 0 °C to 70 °C (32 °F to 99 °F)

Resolution: ± 0,5 °C (± 1 °F)

Storage: -20 °C to 50 °C (-4 °F to 99 °F)

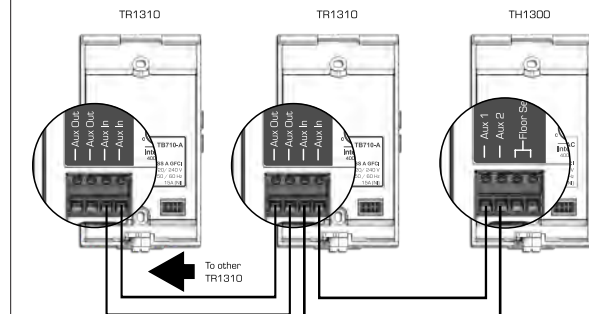
Auxiliary output: 24 Vac/Vdc / 0.1 A

Install your thermostat



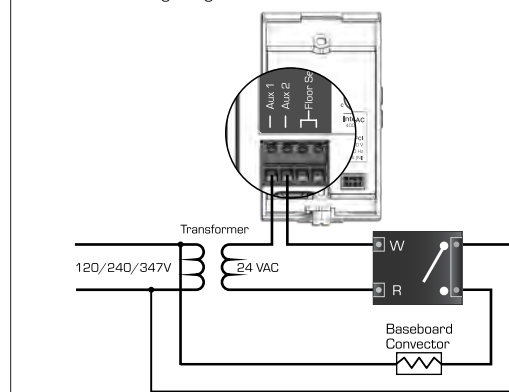
Connect an expansion unit (TR1310)

It is possible to connect up to 10 expansion units to the same device.



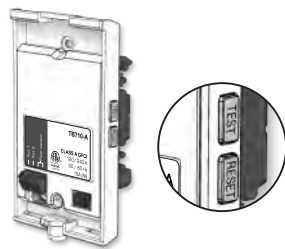
Connect the auxiliary output

Second heating stage



Ground fault protection

The thermostat is equipped with a ground fault protection that can detect a current leakage of 5 mA. When a current leakage is detected the ground fault protection is triggered and quickly interrupts the power supply to prevent any serious injuries.



Resetting the ground fault protection

The RESET button warning light turns ON (red) when the ground fault protection is triggered. If the RESET button warning light turns ON during normal operation of the thermostat, simply press the RESET button to reset the ground fault protection. The light will turn OFF. If for any reason this situation occurs again, cut the power to the heating system from the main electrical panel and ask a qualified electrician to verify the installation.

Testing the ground fault protection

This thermostat has an Auto Test which verifies periodically the correct operation of the protection circuit. You can also do this manually:

- 1) Press the TEST button. If the RESET button's, red warning light does not turn ON, the test has failed. Cut the power to the heating system from the main electrical panel and ask a qualified electrician to verify the installation.
- 2) Press the RESET button to restart the thermostat's base. This test should be performed on a monthly basis to ensure proper operation of the ground fault protection.

User settings

Get the setpoint to its minimum and hold the ↓ button for 10 seconds to access the menu.

Press the ↓ or ↑ button to change the setting.

Press the ↓ and ↑ buttons simultaneously to save and go to the next parameter. Continue to press until the end of the list to exit the menu.



The thermostat offers 2 temperature regulation modes:

F mode: Regulates the floor's temperature by means of an external temperature sensor with the possibility to limit ambient temperature.

A mode: Regulates the ambient temperature with the possibility to limit floor temperature by means of an external temperature sensor.

1) Assigning the auxiliary output (F mode):

The thermostat provides an auxiliary output that has one function which is set from the user settings.

Slave Function: Auxiliary output for connecting several heating floors (TR1310 sold separately).

Assigning the auxiliary output (A mode):

The thermostat provides an auxiliary output that has three functions which are set from the user settings.

Shrt Function: Short cycle auxiliary output (15 seconds). Used for a heater controlled through an electronic relay (SSR).

Long Function: Long cycle auxiliary output (15 minutes). Used for a heater controlled through an electromechanical relay or equipped with a fan.

Slave Function: Auxiliary output to connect several heating floors (TR1310 sold separately).

In A mode the thermostat controls the ambient temperature with the floor. Once the floor temperature has reached its limit, if the desired ambient temperature is not reached, the auxiliary output activates the heating device to reach the set temperature. (The auxiliary output acts as a second heating stage.)

2) Maximum floor temperature limit (A mode)

The thermostat limits floor heating to the set temperature to ensure it does not exceed the selected limit. Ideal for protecting engineered wood floors. (Verify with your flooring manufacturer to determine heat limit.)

3) Maximum ambient temperature limit (F mode)

The thermostat limits floor heating to ensure that the ambient temperature does not exceed the selected limit.

4) Load power (A and F modes)

The thermostat is equipped with a sensor that can read the load in watts connected to the thermostat.

Advanced settings

#	Name	Parameters & settings	Display
1	Temp	Temperature format °C or °F (default: °C)	°C
2	Control	Control mode A (Air), F (Floor) (default: F)	F
3	Aux	Assignment of auxiliary output Shrt, Long, Slave (default: Slave) (1)*	SLAVE
4	Min	Minimum setpoint 5 °C to 30 °C (default: 5 °C)	5.0°
5	Max	Maximum setpoint 5 °C to 30 °C (default: 30 °C)	30.0°
6	Min Floor	Minimum floor temperature 5 °C to 30 °C (default: OFF) (2)*	OFF
7	Max Floor	Maximum floor temperature 5 °C to 30 °C (default: OFF) (2)*	OFF
8	Max Air	Maximum ambient temperature 5 °C to 30 °C (default: OFF) (3)*	OFF
9	Sens	Floor sensor 10K or 12K (default: 10K)	10
10	BL	Backlight control ON or OFF (default: ON)	ON
11	Load	Load power 0 W to 3600 W (4)*	1500

* Refer to the previous pages for more information on these parameters.

3-year limited warranty

SINOPÉ TECHNOLOGIES INC. warrants the components of their products against defects in material and workmanship for a 3 year period from the date of purchase, under normal use and service, when proof of purchase of such is provided to the manufacturer. This warranty does not cover any transportation costs that may be incurred by the consumer. Nor does it cover a product subjected to misuse or accidental damage. The obligation of Sinopé Technologies Inc., under the terms of this warranty, will be to supply a new unit and this releases the manufacturer from paying the installation costs or other secondary charges linked to replacing the unit or the components.

sinopé

For more information, visit our website at:
www.sinopetech.com

To be informed about our upcoming products:



or subscribe to our newsletter.