

# Installation guide

TH1500RF

Web programmable  
Double-pole thermostat

sinopé

## Warnings

The installation of this thermostat must be performed by a certified electrician and comply with the national and local electrical codes and regulations.



Make sure to turn off the heating circuit at the main electrical panel to avoid any risk of electric shock.

## Technical specifications

Operating voltage: 120 / 208 / 240 / 277 Vac, 50 / 60 Hz

### Maximum load:

1800 W @ 120 V / 15 A

3120 W @ 208 V / 15 A

3600 W @ 240 V / 15 A

4155 W @ 277 V / 15 A

**Setpoint range:** 5 °C to 30 °C (41 °F to 86 °F)

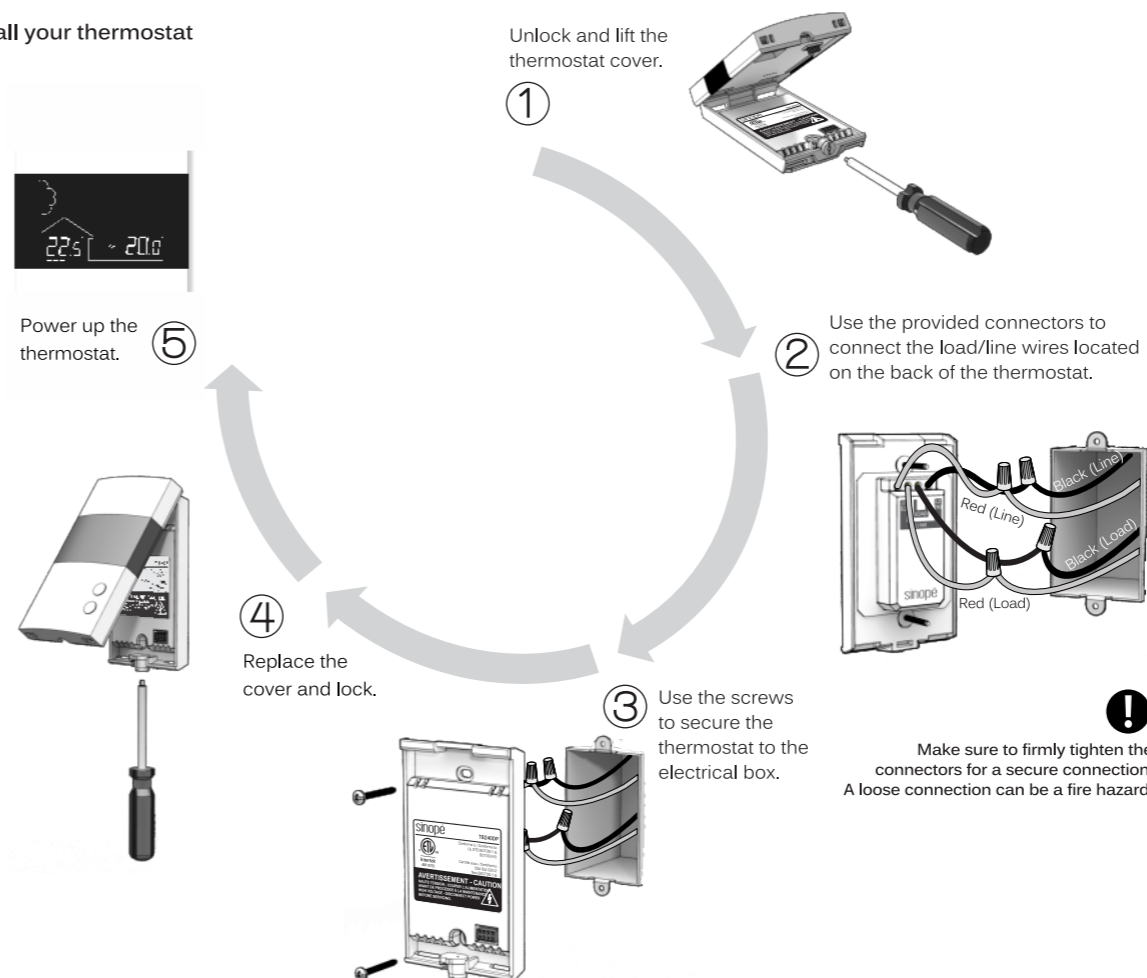
**Display range:** 0 °C to 50 °C (32 °F to 99 °F)

**Resolution:** ± 0.5 °C (± 1 °F)

**Storage:** -20 °C to 50 °C (-4 °F to 122 °F)

**Operation:** 0 °C to 50 °C (32 °F to 122 °F)

## Install your thermostat



## User settings

All the thermostat parameters can be programmed through your neviweb® account. If you haven't created your neviweb® account yet, you will still be able to change the temperature and backlight parameters directly from the device as follows:

Get the setpoint to its minimum and hold the button for 10 seconds to access the menu.



Press the ↓ or ↑ button to change the setting.

Press the ↓ and ↑ buttons simultaneously to save and go to the next parameter. Continue to press until the end of the list to exit the menu.

Parameters that can be changed directly from the device:

#	Name	Parameters and settings	Display
1	Temp	Temperature format °C or °F (Default: °C)	°C
2	Min	Minimum setpoint 5 °C to 30 °C (Default: 5 °C)	5.0°
3	Max	Maximum setpoint 5 °C to 30 °C (Default: 30 °C)	30.0°
4	BL	Backlight control ON/OFF (Default: ON)	ON
5	Load	Load current 0 A to 15 A (1)	A
6	Load	Load power 0 W to 4155 W (2)	P

For more parameters, visit [www.neviweb.com](http://www.neviweb.com)

**1) Load current**

Reading of the load current, featured in amperes.

**2) Load power**

Reading of the load power connected to the thermostat, featured in watts.



**Connect your thermostat to your Web interface**

① Initiate the connectivity session by pressing on the button of the GT125. (Do not hold the button.)

Wait until the green light flashes, which indicates that new devices can be added to your network.



④ **Connect your network to neviweb®**

If you already have a neviweb® account, your thermostat will automatically be integrated to your account. If you do not have an account yet, visit [neviweb.com](http://neviweb.com) to open an account and add your network. To do so, use the GT125 installation guide.



For more information, visit our Website: [www.sinopetech.com](http://www.sinopetech.com)

Connect to your network the wireless thermostat that is the closest to the GT125 by pressing simultaneously the and buttons.



②



On the thermostat display:  
 Flashes = Connecting  
Remains lit = Connected

If the connection fails, an error message will appear on the display. Refer to our Website to troubleshoot the unit.

③

Connect all your wireless thermostats the same way, by going to the next closest thermostat.

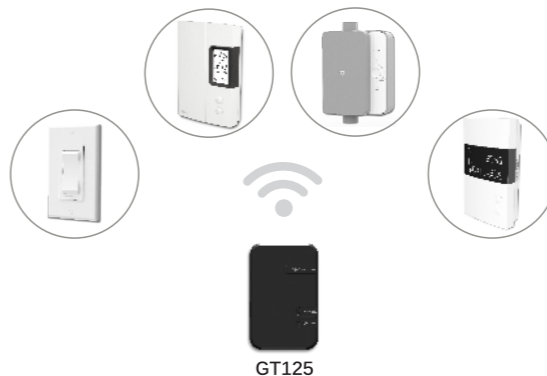


When all the thermostats are connected, press again on the button of the GT125 to close the connectivity session.



**Manage your devices anytime!**

You have the possibility to connect up to 250 neviweb® compatible devices to one GT125 Web interface. Visit [sinopetech.com](http://sinopetech.com) to discover the complete neviweb® line of products.



To be informed about our upcoming products:



or subscribe to our newsletter.



Transmitter Module IC: 7693A-89XAM9A / FCC ID:OA3MRF89XAM9A

This device complies with Industry Canada license exempt RSS standard(s). Operation is subject to the following two conditions: (1) this device does not cause interference, and (2) this device must accept any interference, including interference that may cause undesired operation of the device.

This equipment has been tested and found to comply with the limits for a Class B digital device, pursuant to part 15 of the FCC Rules. These limits are designed to provide reasonable protection against harmful interference in a residential installation. This equipment generates, uses and can radiate radio frequency energy, and if not installed and used in accordance with the instructions, may cause harmful interference to radio communications. However, there is no guarantee that interference will not occur in a particular installation. If this equipment does cause harmful interference to radio or television reception, which can be determined by turning the equipment OFF and ON, the user is encouraged to try to correct the interference by one or more of the following measures: Reorient or relocate the receiving antenna. Increase the separation between the equipment and receiver. Connect the equipment into an outlet on a circuit different from that to which the receiver is connected. Consult the dealer or an experienced radio/TV technician for help.

**3-year limited warranty**

SINOPÉ TECHNOLOGIES INC. warrants the components of their products against defects in material and workmanship for a 3 year period from the date of purchase, under normal use and service, when proof of purchase of such is provided to the manufacturer. This warranty does not cover any transportation costs that may be incurred by the consumer. Nor does it cover a product subjected to misuse or accidental damage. The obligation of Sinopé Technologies Inc., under the terms of this warranty, will be to supply a new unit and this releases the manufacturer from paying the installation costs or other secondary charges linked to replacing the unit or the components.



For more information, visit our website:

[www.sinopetech.com](http://www.sinopetech.com)