

Installation Guide

TH1120RF-3000 (3000 W)

TH1120RF-4000 (4000 W)

Web programmable thermostat

sinopé

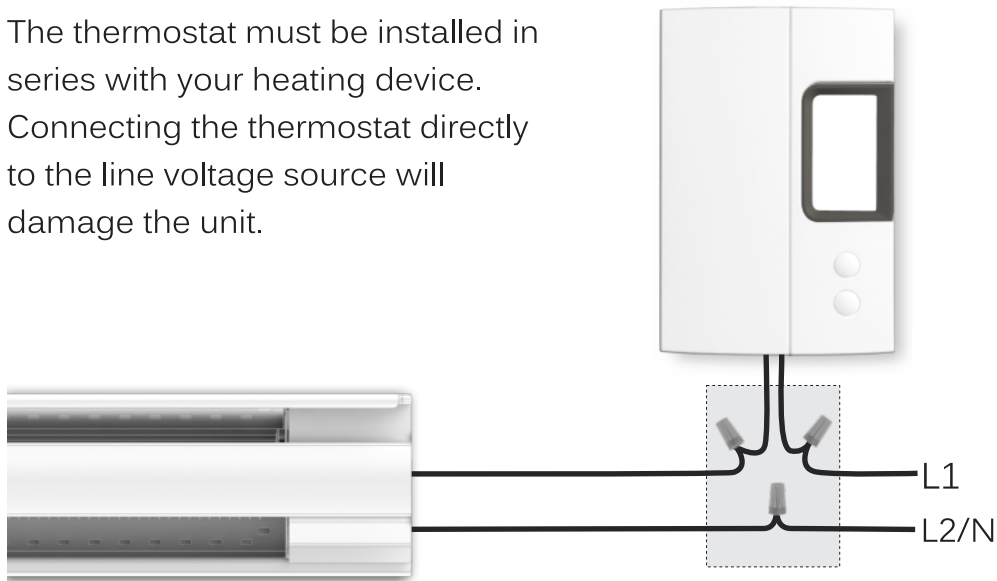
Warnings

The installation of this thermostat must be performed by a certified electrician and comply with the national and local electrical codes and regulations.



Since you are a valuable customer, before starting the installation of your new thermostat, please make sure that the breakers for your heating system are off at the main electrical panel!

The thermostat must be installed in series with your heating device. Connecting the thermostat directly to the line voltage source will damage the unit.



Note: The wires of this thermostat are non-polarized.

Technical Specifications

Operating voltage: 120/208/240 Vac, 60 Hz

TH1120RF-3000 thermostat

Maximum load:

12.5 A / 3000 W @ 240 Vac

Resistive load only

Minimum load:

0.5 A / 120 W @ 240 Vac

TH1120RF-4000 thermostat

Maximum load:

16.7 A / 4000 W @ 240 Vac

Resistive load only

Minimum load:

0.5 A / 120 W @ 240 Vac

Setpoint range: 5 °C to 30 °C (41 °F to 86 °F)

Display range: 0 °C to 70 °C (32 °F to 99 °F)

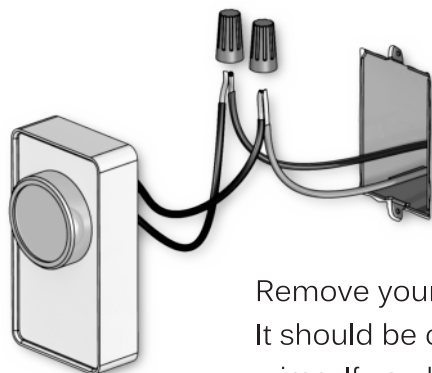
Resolution: ± 0.5 °C (± 1 °F)

Storage: -20 °C to 50 °C (-4 °F to 122 °F)

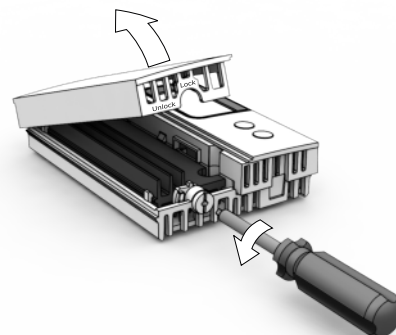
Compatible with an electric heating system such as:

- Baseboard heater
- Convactor (short cycle)
- Fan-forced convactor (long cycle)

Install your thermostat



Remove your old thermostat. It should be connected to 2 wires. If you have more than 2 wires, refer to our website (FAQ).



Power up the thermostat.



Note: For a fan-forced convector, go to the "Advanced Settings" section to change the control cycle of the thermostat.

①

②

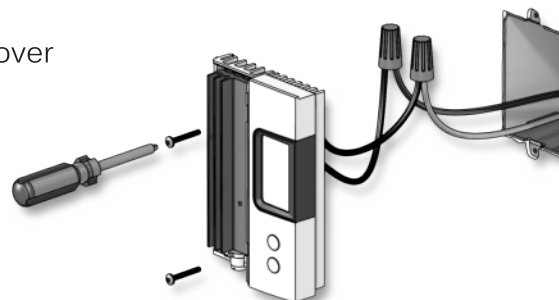
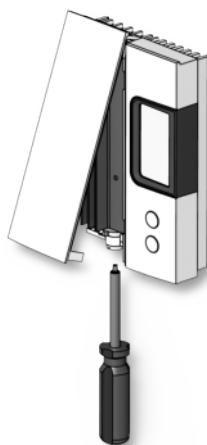
Unlock and lift the thermostat cover. Use the provided connectors to connect the two wires of the thermostat to the wires previously connected to your old thermostat.

③

Use the two screws to secure the thermostat to the electrical box.

④


Replace the cover and lock.



Make sure to firmly tighten the wire connectors for a secure connection. A loose connection can be a fire hazard. Special CO/ALR solderless connectors must be used when connecting with aluminum conductors.

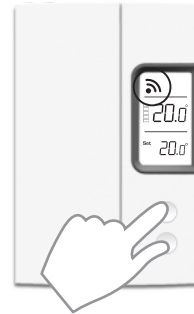
Connect your thermostat to your Web interface



Initiate the connectivity by pressing the  button on the GT125.
(*Do not hold the button).



Wait until the green light flashes, which indicates that new devices can be added to your network.

①



On the thermostat display: 

Flashes = Connecting
Remains lit = Connected

Connect to your network the wireless thermostat that is the closest to the GT125 by pressing simultaneously the  and  buttons.

②

If the connectivity fails, an error message will appear on the display. Refer to our Website to troubleshoot the unit.

③

Connect **all** your wireless thermostats the same way, by going to the next closest thermostat.


④



Connect your network to neviweb®

If you already have a neviweb® account, your thermostat will automatically be integrated to your account. If you do not have an account yet, visit **neviweb.com** to open an account and add your network. To do so, use the GT125 installation guide.



When all the thermostats are connected, press again on the  button of the GT125 to close the connectivity session.

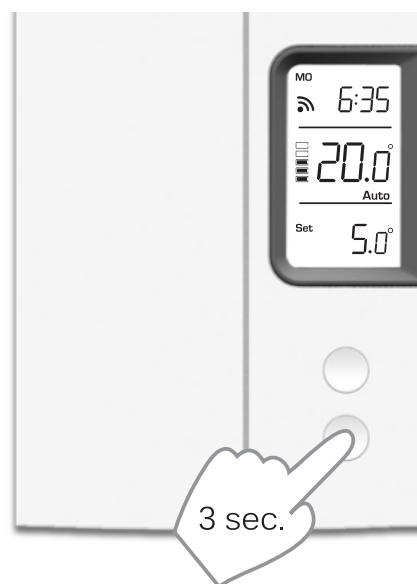


For more information, visit
www.sinopetech.com

Advanced Settings

All of the thermostat's settings can be set through the Web. However, if you have not created your wireless network and need to change the control cycle, you must:

Get the setpoint to its minimum and hold the ↓ button for 3 seconds to access the menu.



Press the ↑ button to change the setting.

Press the ↓ button to select the next parameter.

Press and hold the ↓ button for 3 seconds to exit the menu and return to normal display.

Order	Parameter & Setting	Default Display
1	Cycle SHRT (short cycle for electric baseboard) FAN (long cycle for fan forced heater)	SHRT Cycle

Transmitter Module IC: 7693A-89XAM9A / FCC ID:OA3MRF89XAM9A

This device complies with Industry Canada license exempt RSS standard(s). Operation is subject to the following two conditions:

(1) this device does not cause interference, and (2) this device must accept any interference, including interference that may cause undesired operation of the device.

This equipment has been tested and found to comply with the limits for a Class B digital device, pursuant to part 15 of the FCC Rules. These limits are designed to provide reasonable protection against harmful interference in a residential installation. This equipment generates, uses and can radiate radio frequency energy, and if not installed and used in accordance with the instructions, may cause harmful interference to radio communications. However, there is no guarantee that interference will not occur in a particular installation. If this equipment does cause harmful interference to radio or television reception, which can be determined by turning the equipment OFF and ON, the user is encouraged to try to correct the interference by one or more of the following measures:

- Reorient or relocate the receiving antenna.

- Increase the separation between the equipment and receiver.

- Connect the equipment into an outlet on a circuit different from that to which the receiver is connected.

- Consult the dealer or an experienced radio/TV technician for help.

3-year limited warranty

SINOPÉ TECHNOLOGIES INC. warrants the components of their products against defects in material and workmanship for a 3 year period from the date of purchase, under normal use and service, when proof of purchase of such is provided to the manufacturer. This warranty does not cover any transportation costs that may be incurred by the consumer. Nor does it cover a product subjected to misuse or accidental damage. The obligation of Sinopé Technologies Inc. under the terms of this warranty, will be to supply a new unit and this releases the manufacturer from paying the installation costs or other secondary charges linked to replacing the unit or the components.

sinopé

For more information, visit our Website at:

www.sinopetech.com



To be informed about our upcoming products:



or subscribe to our newsletter.